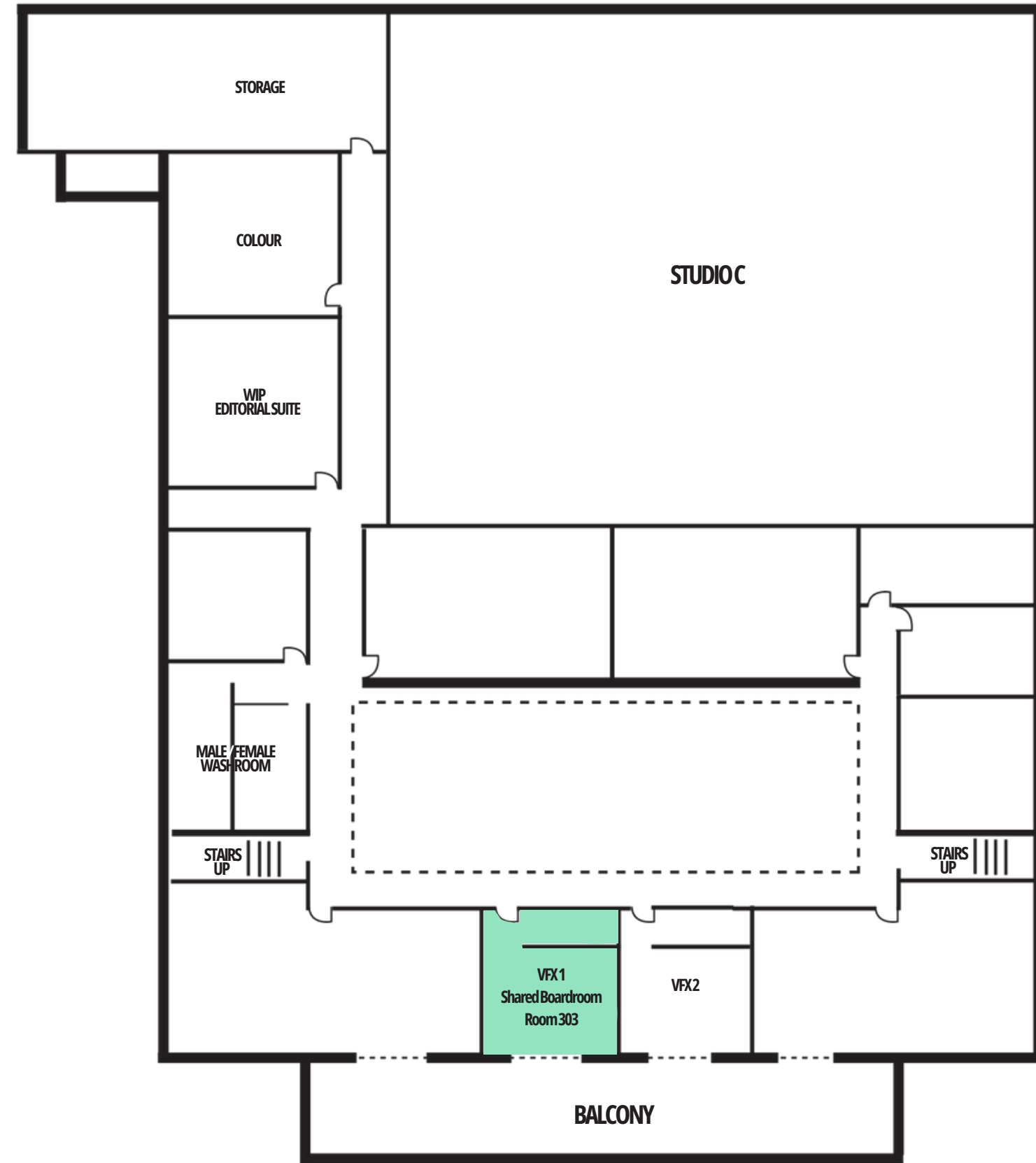
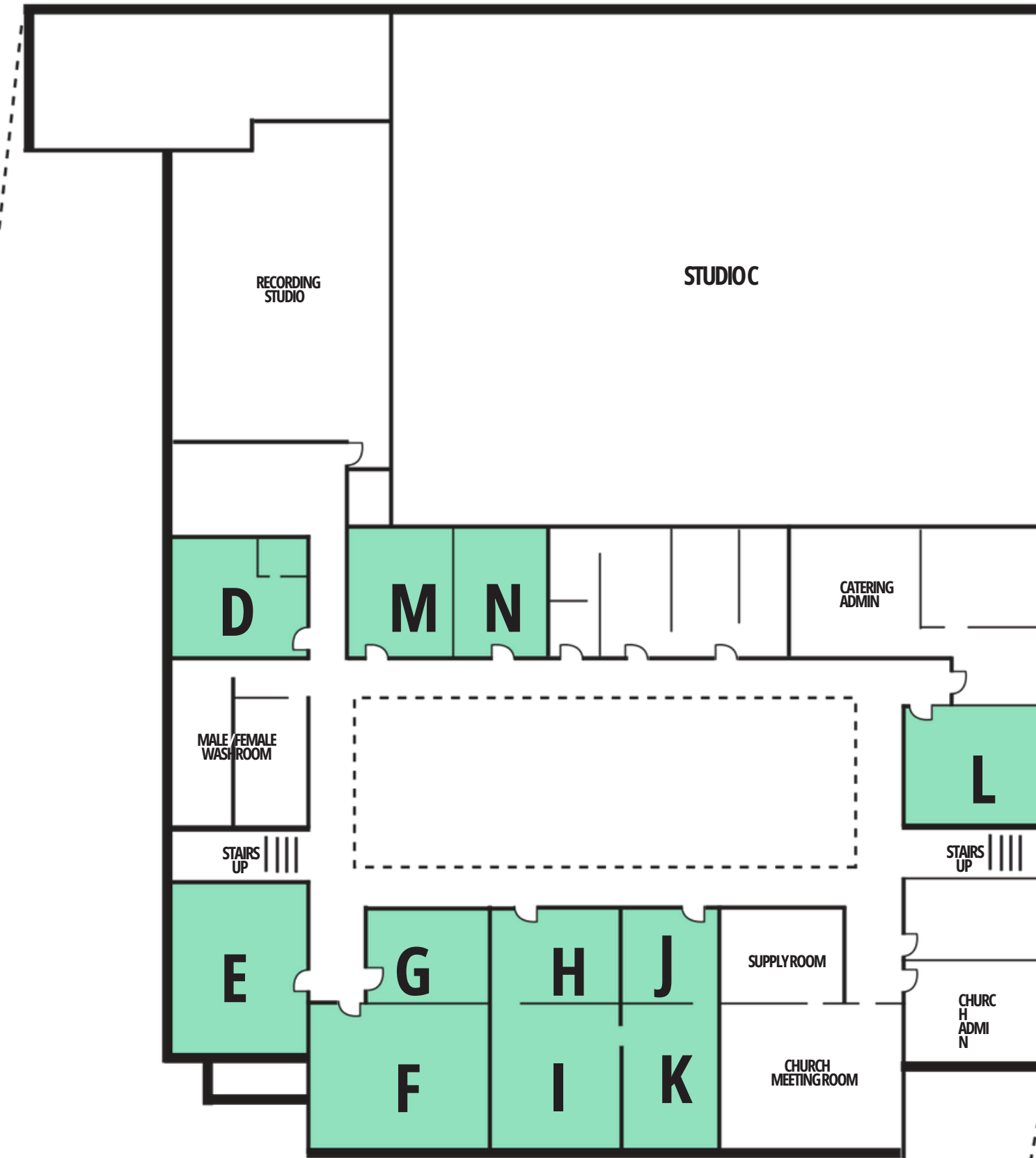


THIRD FLOOR



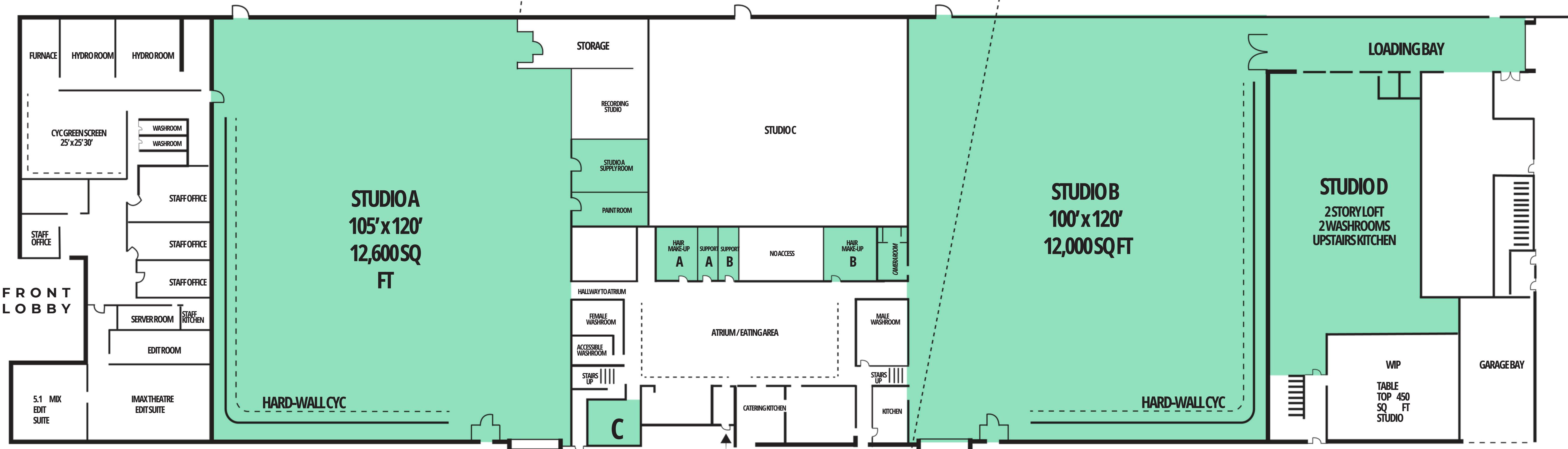
SECOND FLOOR



MAIN FLOOR LEGEND:
 SUPPORT ROOM D- 14' X 10' = 140 SQ FT + 3 PIECE WASHROOM WITH A SHOWER
 SUPPORT ROOM E- 14' X 20' = 280 SQ FT + A SINK IN THE ROOM + HAIR AND MAKE-UP STATION
 SUPPORT ROOM F- 20' X 15.5' = 310 SQ FT
 SUPPORT ROOM G- 10' X 13' = 130 SQ FT
 SUPPORT ROOM H- 14' X 10' = 140 SQ FT
 SUPPORT ROOM I- 14' X 16.5' = 231 SQ FT
 SUPPORT ROOM J- 8' X 10.5' = 84 SQ FT
 SUPPORT ROOM K- 11.5' X 12' = 138 SQ FT
 SUPPORT ROOM L- 15' X 11' = 165 SQ FT
 SUPPORT ROOM M- 15' X 11' = 165 SQ FT
 SUPPORT ROOM N- 15' X 8' = 120 SQ FT + A 3 PIECE WASHROOM WITH SHOWER
 SUPPORT ROOM TOTAL AVAILABLE: 1,903

 DARK SLOPE SPACE

MAIN FLOOR



MAIN FLOOR LEGEND:

STUDIO A 105' X 120' = 12,600 SQ FT. SUPPORT ROOM 2 - 22' X 25' = 550 SQ FT	STUDIO B 100' X 120' = 12,000 SQ FT LOADING BAY 66' X 15' = 990 SQ FT STORAGE ROOM 15.5' X 9' = 139.5 SQ FT TOTAL: 26,280.00
--	---

MAIN GATE: 15' CLEAR HEIGHT • HEAT & AIR CONDITIONED • CLEAR HEIGHT 27' TO GRID

GROUND FLOOR SUPPORT TOTAL 922 SQ FT: HAIR & MAKE-UP A- 225 SQ FT HAIR AND MAKE-UP B- 225 SQ FT SUPPORT ROOM A- 128 SQ FT SUPPORT ROOM B- 128 SQ FT SUPPORT ROOM C- 216 SQ FT	STUDIO D 2 STORY LOFT TOTAL 3,353 SQ FT 75' X 33' = 2475 SQ FT WITH 20' CLEAR HEIGHT MEZZANINE WITH KITCHEN- 33' X 22' = 726 SQ FT FT COVE AT TOP OF STAIRS 8' X 19' = 152 SQ FT
--	---